

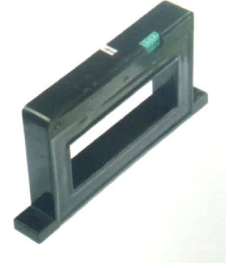
HDC-10000HA Series Hall Current Sensor

Introduction

HDC-10000HA Series Hall current transducer is the new generation product based on Hall effect. It is able to measure DC, AC, pulse and other currents with irregular waves under the condition of electrical isolation.

△Electrical Parameters (Ta=25°C)

Type		HDC-3000HA	HDC-5000HA	HDC-8000HA	HDC-10000HA
Parameters	Symbols				
Nominal measuring current	I_{PN}	3000A	5000A	8000A	10000A
Linear range	I_P	0~±4000A	0~±6000A	0~±9000A	0~±12000A
Nominal output voltage	V_{SN}	±4V±0.04V			
Zero offset voltage	V_O	±0.03V($I_{PN}=0$)			
Temperature drift of bridge offset	V_{OT}	≤±1mV/°C			
Linear error	ξ_L	±1%			
Supply voltage	V_C	±15V±5%			
Isolation voltage	V_d	2.0KV/50 or 60HZ/1min			
Power dissipation current	I_C	±30mA			
Frequency bandwidth	T_a	-25°C~+85°C			
Operating temperature	T_s	-40°C~+90°C			



Features:

- ◆ Use open-loop current transducer based on Hall effect
- ◆ Adopt UL94V-0-recognized insulated casing
- ◆ Excellent linearity
- ◆ Punching way has no insertion loss

Applications:

- ◆ AC variable-frequency speed control system and servo motor
- ◆ Uninterruptible power supply (UPS)
- ◆ Switched-mode power supply
- ◆ Battery supply
- ◆ Communication power supply
- ◆ Power supply for electric welding machine

Instructions for Use:

- ◆ Connect the wire of transducer in correct way as required.
- ◆ Inputting measured current from punched core of transducer, the in-phase current/voltage signal can be obtained from output end by sampling.

Connection and adjustment:

- ◆ 1: 0V
- ◆ 2: Output
- ◆ 3: -Vc (-15V)
- ◆ 4: +Vc (+15V)
- ◆ OFS: Offset
- ◆ GIN: Gain

△Dimension :(mm)

